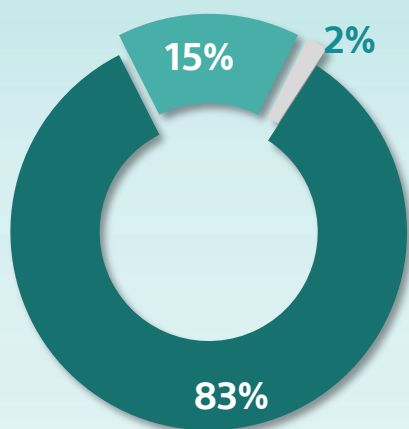
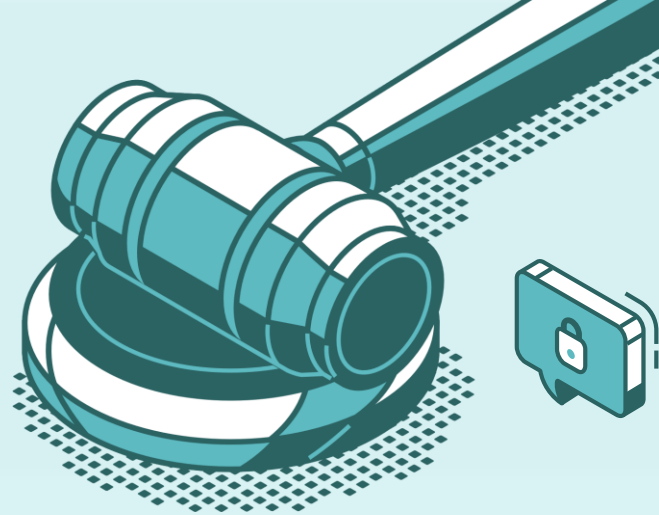


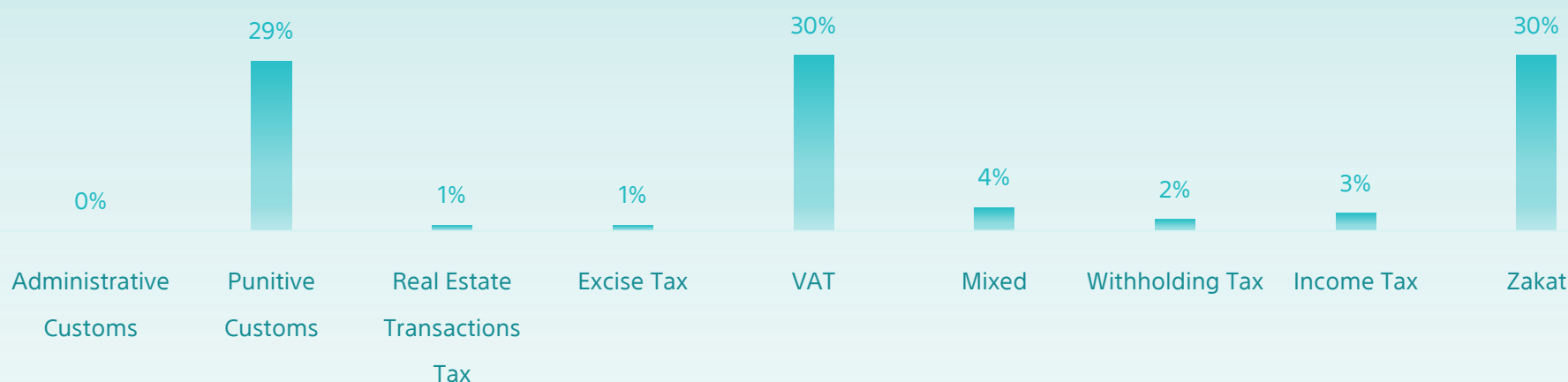
All Cases Report

Until June 2023



Initial Appeal Reconsider

Classification	Initial	Appeal	Reconsider	Total
Zakat	38,361	9,648	1,505	49,514
Income Tax	3,346	967	87	4,400
Withholding Tax	1,921	764	79	2,764
Mixed	4,546	1,345	119	6,010
VAT	40,617	7,231	754	48,602
Excise Tax	709	219	14	942
Real Estate Transactions Tax	1,224	173	23	1,420
Punitive Custom	41,739	3,745	240	45,724
Administrative Customs	377	165	28	570
Total	132,840	24,257	2,849	159,946



Top cases classification / type



Fine (VAT)
11%



Tax Assessment-
Discretion (Zakat)
15%



Tax Assessment -
Accounts (Zakat)
16%



Tax Return & Fine (VAT)
9%



Disposing of a restricted cleared merchandise
with a pledge not to dispose of.
(Customs)
18%

